



# CaptureTag™ for AutoCAD®

“A unique drawing management solution from CAD-CAPTURE”

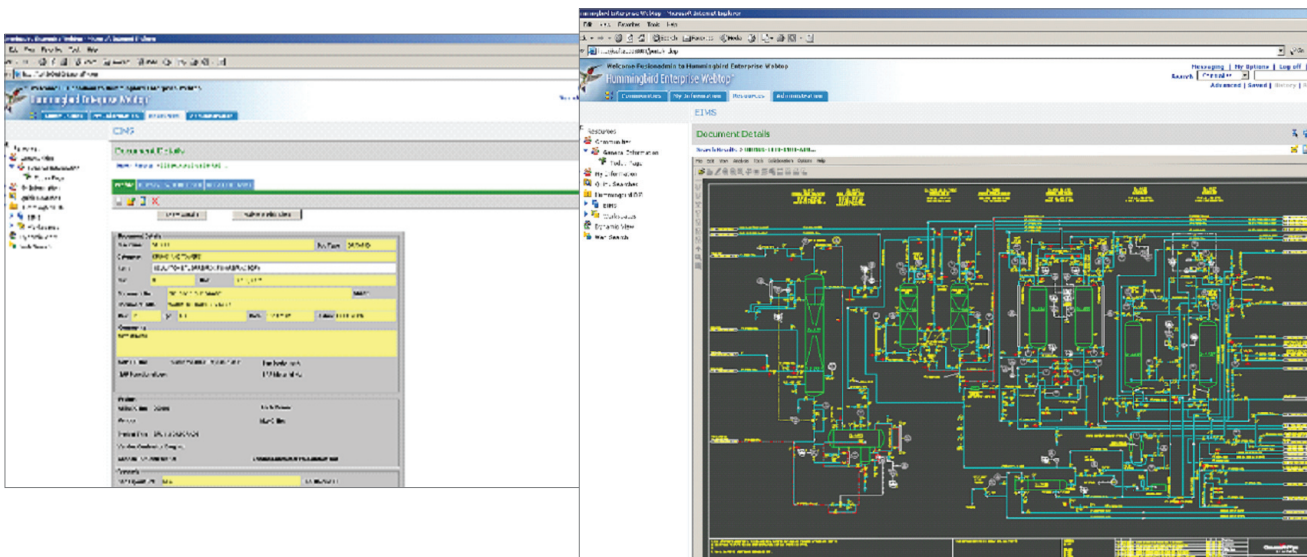
In the process industry the management of process lines, pipes and equipment is a vital business function regulated by the Health and Safety Executive.

Access to up-to-date information such as, e.g. material type, size, content, age, condition, inspection dates, temperature and pressure etc, is critical in ensuring that maintenance work is carried out in an efficient and timely manner.

Seamlessly integrated within the Livelink ECM - eDOCSTM – DM environment, CaptureTag for AutoCAD® is an essential tool for managing structured CAD drawings including process flow schematics such as, e.g. PEFS and P&IDs.

CaptureTag for AutoCAD® adds intelligence to AutoCAD® drawings residing in Livelink ECM - eDOCSTM – DM by tagging individual drawing elements according to, e.g. their equipment or line number, which is stored as extended entity data, enabling drawings associated with a specific element or group of elements to be recovered, alongside other related documents, with agility and ease.

Interoperable with Cad-Capture’s CaptureVue add-on module for Livelink ECM - eDOCSTM – DM, drawings can be viewed with matching elements highlighted, facilitating easy identification when previewing, e.g. complex PEFS or P&IDs.



## About Cad-Capture

Cad-Capture provides a complete range of solutions enabling organisations to capture and manage their engineering documents, drawings and data.

The fusion of specialist document conversion and data services with many years experience in systems implementation and application hosting makes it possible for Cad-Capture to provide truly effective solutions.

When considering document, content and data management projects, customers can be confident that Cad-Capture will provide the best available solution.

Founded in 1987, Cad-Capture has evolved as one of the longest established and most experienced companies in its field.

**Autodesk®**  
Authorised Developer